



HOME NEWS FEATURES ARTISTS FILM MUSIC FASHION GALLERY DISTRICT MAGAZINE SEARCH

EP
0
112

ARTISTS ANONYMOUS: ALICE'S APOCALYPSE

NEWS



SIGN UP TO OUR MAILING LIST

ENTER YOUR EMAIL ADDRESS >>

RECENT NEWS



TOM WESSELMANN: Still life, nude, landscape



Cut to the Bone



ROOMS 12: G(O)OD + (D)EVIL



Rock & Raw: Granville Sessions



Spectrum



From the 6th September to 13th of October the Lazarides Gallery will present the highly anticipated new

exhibition featuring Artists Anonymous called *Alice's Apocalypse*. Visitors are guaranteed to be transported into an alternative universe, in which the lines between beauty and macabre are blurred into an eccentric fantasy world saturated with vivid colours.

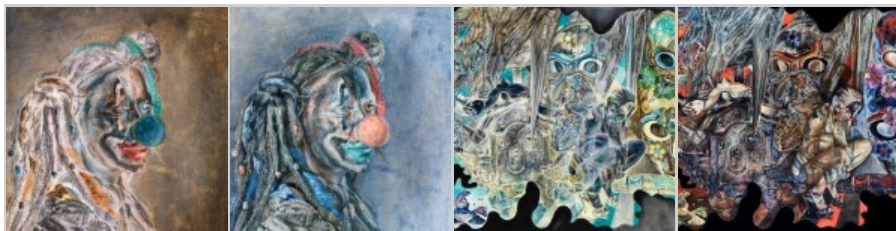
Artists Anonymous was formed in 2001, with all members living and working between London and Berlin. The group focus on a wide combination of disciplines, ranging from painting and photography, to performance and installation. Often noted for being futuristic in appearance, the themes they frequently choose revolve around contemporary topics such as war, sex, drugs, famine and rock 'n' roll.

Many pieces in the exhibition come in pairs, one providing a more lighthearted view of the subject, whereas its counter part uses darker colours, creating a more sinister view point of nightmarish proportions. As a viewer, you will be asked to 'look again' and try to see the subjects from a different perspective, offering a very refreshing take on contemporary art. The images take us on an emotional journey through the deepest, darkest parts of the artists' imaginations. Amongst the fairytale references of nymphs and dream like castles scattered with toadstools, bursts a saturated mixture of acid colour and vibrant tone. Often referencing contemporary popular culture along the way, such as Anime characters or fairies wearing lace up trainers. *Alice's Apocalypse* is a must see for anyone that enjoys losing themselves in the realms of imagination, and is sure to deliver you to a world in which daydreams become reality and the unearthly becomes the norm.

By Beatrice Cartwright

Lazarides Rathbone, 11 Rathbone Place, W1T 1HR

Tuesday – Saturday 11am – 7pm, admission [free](#)



SCOPE
MIAMI BEACH 2013
INTERNATIONAL CONTEMPORARY ART SHOW
DECEMBER 3 - DECEMBER 8
NEW LOCATION
1000 OCEAN DRIVE



Like 9 Tweet 1 0

Previous Post: [RAY RICHARDSON: Everything is Everything](#)

Next Post: [ZIPANGU FEST: The UK Japanese film festival](#)



Add a comment...

Post to Facebook

Posting as Maya van Malden [\(Change\)](#)

Facebook social plugin

[USER HELP](#)

[JOIN US](#)

[MORE](#)

[FOLLOW US ON](#)